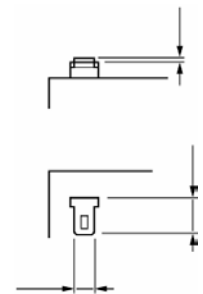
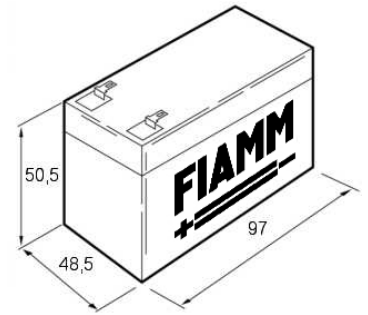


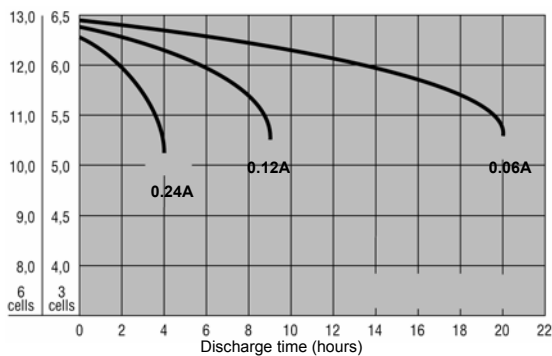
PERFORMANCE SPECIFICATION FOR BATTERY TYPE FG 20121

Nominal Voltage	12 Volts
Nominal Capacity	at 20 hour rate (60 mA to 10.5 Volts), 1.2 Ah at 10 hour rate (106 mA to 10.5 Volts) 1.06 Ah at 5 hour rate (196 mA to 10.2 Volts) 980 mAh at 1 hour rate (700 mA to 9.0 Volts) 700 mAh
Dimensions (mm)	Length=97, Width=48.5, Height=50.5
Approximate weight	630 g
Energy Density	60.6 Wh/l
Specific Energy	24.8 Wh/kg
Internal Resistance (Fully charged battery)	100 mΩ
Maximum discharge current in 1 minute	7.2 A
Maximum discharge current in 5 seconds	12 A
Recommended charging voltage (@20°C)	floating use: 13,5-13,8 V cyclic use: 14,4-15,0 V
Thermal compensation factor	floating use: -18mV/°C cyclic use: -30mV/°C
Maximum charging current	0,3 A
Terminals	Flat lug type 4.8 mm
Torques	6Nm
Vibration Test	
- (2000 cycles/min, 2,55 mm excursion, 2 hrs)	No loss in capacity or performance
Shelf life - % of nominal capacity at 20°C	1 Month 97% 3 months 91% 6 months 83%
Storage temperature	-20°C to 40°C
Operative temperature range	Charge 0° C to 40°C Discharge -20°C to 50°C
Case material	Acrylonitrile-Butadiene-Styrene Standard Case: according to UL-94 HB Also available: according to UL-94 VO
Life expectancy (Stand-by)	3 to 5 years according to Eurobat standards

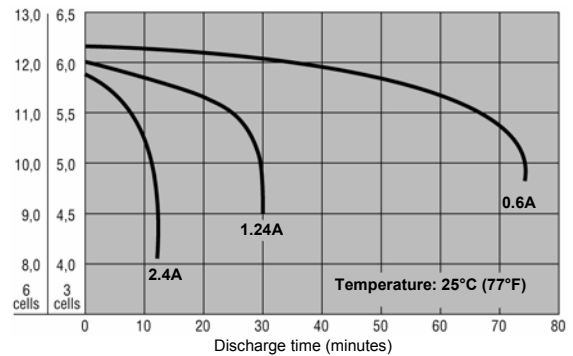


TIME	5'	10'	15'	20'	30'	45'	1h	2h	3h	5h	10h	20h
1,8V/Cell	4,1	2,7	2,1	1,73	1,3	0,96	0,77	0,45	0,32	0,21	0,12	0,06
1,75V/Cell	4,4	2,8	2,2	1,77	1,32	0,97	0,78	0,45	0,32	0,21	0,12	0,06
1,7V/Cell	4,8	3	2,2	1,81	1,34	0,98	0,79	0,45	0,33	0,21	0,12	0,06
1,65V/Cell	4,9	3	2,2	1,82	1,34	0,98	0,79	0,45	0,33	0,22	0,12	0,06
1,6V/Cell	5,1	3,1	2,3	1,83	1,34	0,98	0,79	0,46	0,33	0,22	0,12	0,07

TERMINAL TYPE



DISCHARGE TIME VS DISCHARGE CURRENT



Temperature: 25°C (77°F)

FIAMM Sealed Power S.p.A.